

LESSON PLAN 21: ONLINE OE WITH GOOGLE EARTH

Objective: Finding out about other parts of the world

Age range: 6-14

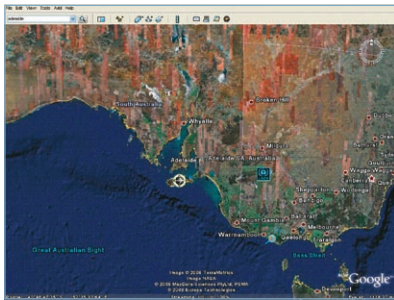
Caroline Armstrong uses Google Earth for her class to explore others parts of the world.

YOU WILL NEED:

- ▶ Computer and Internet connection
- ▶ Google Earth (<http://earth.google.com/>)

DEVELOPING SKILLS

Geography, mapping, navigation, communication and relationship building.



METHOD

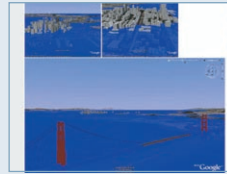
Caroline's Year 4/5 class writes letters to pen pals at Burra Community School in South Australia. She wanted students to learn more about the school and that part of the world, so she turned to Google Earth. Using the mapping application, they were then able identify its location and explore the surrounding area.

"When writing our postcards to Australia, we used Google Earth to fly over and see where the recipients lived, and how it compared to our little village. Students loved the graphic representation and got a much better understanding of where their future pen pals resided ... and even where in the world we were in relation to others."

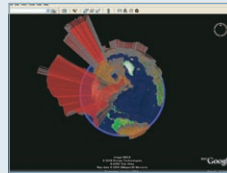
SUBMITTED BY **CAROLINE ARMSTRONG**, KAUKAPAKAPA SCHOOL

LEARNING WITH GOOGLE EARTH

Try these KMLs for some other fun and informative ways that people have used Google Earth:



Rising Sea Level Animation – this file animates the effect of rising sea levels. Use the time slider to see which locations will be submerged as the oceans rise. (Note: it's important to turn on the terrain in the 'Layers').



World Oil Consumption – in this representation, the developer has used data from the *CIA World Factbook* to create polygons that illustrate a country's oil consumption.



International Flights Animation – this file animates flight routes from several international airports in the United States. Once you've opened the file, press the 'play' button next to the time slider.



Chernobyl Radiation Visualisation – this fascinating representation shows radiation levels in a reactor at the Chernobyl nuclear facility. The site of one of the world's worst nuclear accidents, it's interesting to

be able to visualise where the radiation hotspots occur.

These and many others are available in the gallery:

<http://earth.google.com/intl/en/gallery/index.html>

WHAT IS KML?

KML is a file format used to display geographic data in mapping applications, such as Google Earth and Google Maps. It is processed in much the same way that HTML (and XML) files are processed by Web browsers – in effect, Google Earth and Maps act as browsers for you to watch KML files.

**RELATED ARTICLE – LESSON PLAN 4:
GOOGLE EARTH – CREATING A 'TOUR'
(ISSUE 2, AUGUST 2007)**